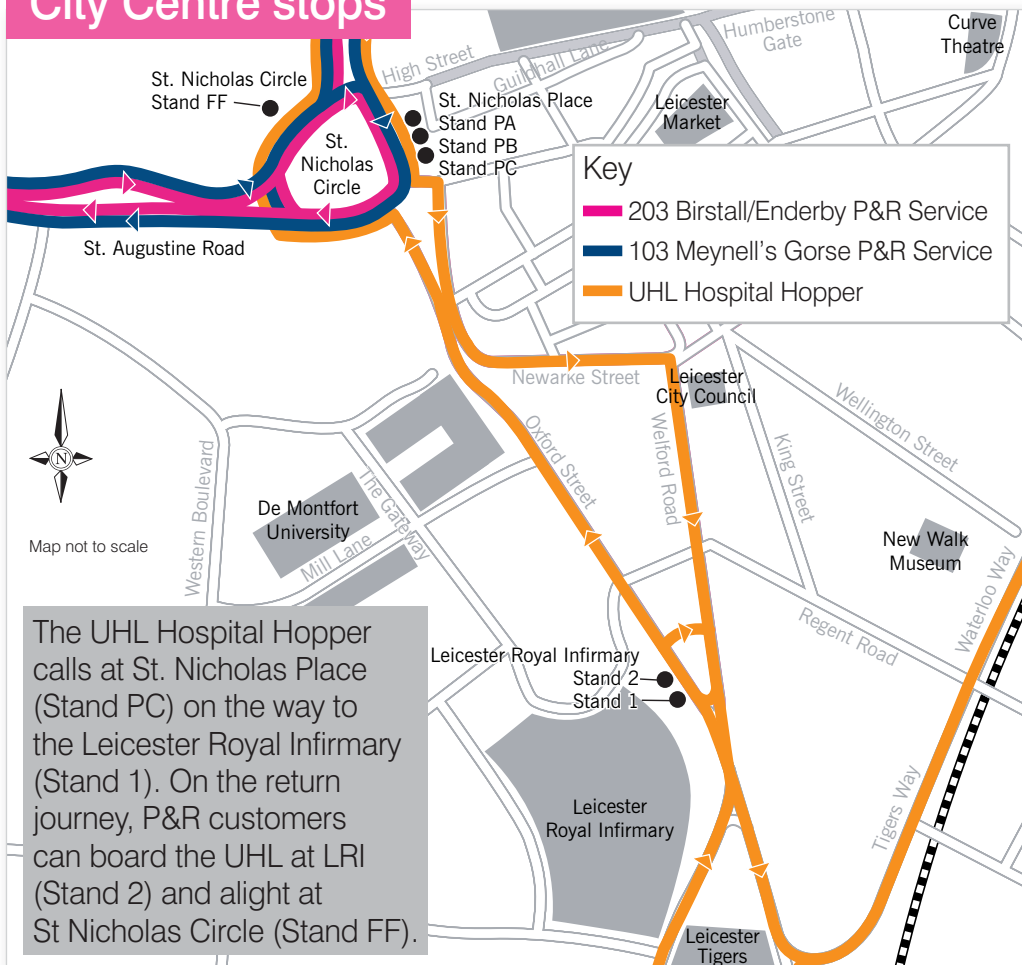


## City Centre stops



Hospital Hopper fares are £1.50 per day from St. Nicholas Place to the LRI for Park & Ride customers only. Travel to/from other destinations are subject to the Hospital Hopper's standard fares. Concessionary fares available for valid pass holders according to standard conditions. UHL staff can travel for free on production of valid ID.

For more information and timetables for the Park & Ride services call **0116 305 0002** or visit [www.quicksilverbus.co.uk](http://www.quicksilverbus.co.uk)  
 For more information on the Hospital Hopper, contact Centrebus on **0844 351 1120** or at [www.centrebus.info](http://www.centrebus.info)

The information contained in this leaflet is correct at time of printing, but may be subject to change. Every effort will be made to maintain these services. However, no liability can be accepted for failure to operate the services as specified. Published November 2011.

**75% recycled**  
When you have finished with this booklet please recycle it

K0820 Design by Creative Services, Leicestershire County Council

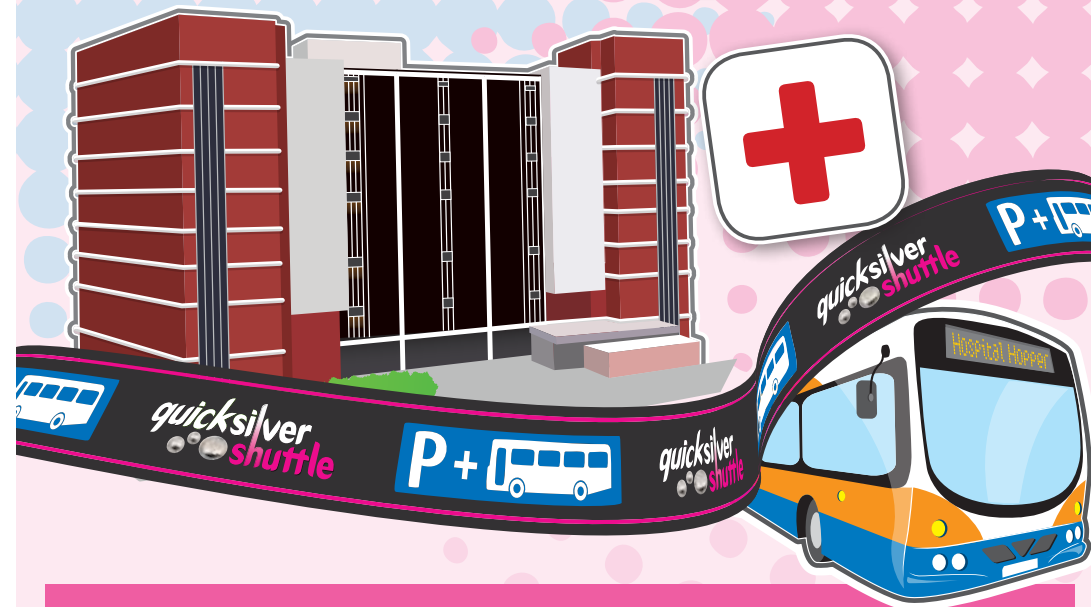
# quicksilver shuttle



## How to use the Park & Ride services to get to the Leicester Royal Infirmary



# November 2011 Updated



The UHL Hospital Hopper, operated by Centrebus calls at St. Nicholas Place on the way to the Leicester Royal Infirmary.

### Birstall Park & Ride Site (203) to Leicester Royal Infirmary

Please note that departure times of the Hospital Hopper from Stand PC are approximate.

MONDAY - FRIDAY*							
Depart Birstall Park & Ride Site	0715	0745	then at these minutes past each hour	15	45	until	1815
Arrive St. Nicholas Place (Stand PA)	0735	0805		35	05		1835
Hospital Hopper depart St. Nicholas Place (Stand PC)	0745	0815		45	15		1845
Arrive Leicester Royal Infirmary (Stand 1)	0750	0820		50	20		1850

### Leicester Royal Infirmary to Birstall Park & Ride Site (203)

MONDAY - FRIDAY*							
Hospital Hopper depart Leicester Royal Infirmary (Stand 2)	0725	0755	then at these minutes past each hour	25	55	until	1825
Arrive St. Nicholas Circle (Stand FF)	0729	0759		29	59		1829
Park & Ride depart St. Nicholas Place (Stand PB)	0745	0815		45	15		1845
Arrive Birstall Park & Ride Site	0810	0840		10	40		1910

### Enderby Park & Ride Site (203) to Leicester Royal Infirmary

Please note that departure times of the Hospital Hopper from Stand PC are approximate.

MONDAY - FRIDAY*							
Depart Enderby Park & Ride Site	0715	0745	then at these minutes past each hour	15	45	until	1815
Arrive St. Nicholas Place (Stand PB)	0730	0800		30	00		1830
Hospital Hopper depart St. Nicholas Place (Stand PC)	0745	0815		45	15		1845
Arrive Leicester Royal Infirmary (Stand 1)	0750	0820		50	20		1850

### Leicester Royal Infirmary to Enderby Park & Ride Site (203)

MONDAY - FRIDAY*							
Hospital Hopper depart Leicester Royal Infirmary (Stand 2)	0725	0755	then at these minutes past each hour	25	55	until	1825
Arrive St. Nicholas Circle (Stand FF)	0729	0759		29	59		1829
Park & Ride depart St. Nicholas Place (Stand PA)	0735	0805		35	05		1835
Arrive Enderby Park & Ride Site	0755	0825		55	25		1855

### Meynell's Gorse Park & Ride Site (103) to Leicester Royal Infirmary

Please note that departure times of the Hospital Hopper from Stand PC are approximate.

MONDAY - FRIDAY*																	
Depart Meynell's Gorse Park & Ride Site	0715	0750	0820	0850	0920	0945	1015	then at these minutes past each hour	45	15	until	1545	1625	1655	1725	1745	1815
Arrive St. Nicholas Place (Stand PC)	0728	0803	0833	0903	0933	0958	1028		58	28		1558	1638	1708	1738	1758	1828
Hospital Hopper depart St. Nicholas Place (Stand PC)	0745	0815	0845	0915	0945	1015	1045		15	45		1615	1645	1715	1745	1815	1845
Arrive Leicester Royal Infirmary (Stand 1)	0750	0820	0850	0920	0950	1020	1050		20	50		1620	1650	1720	1750	1820	1850

### Leicester Royal Infirmary to Meynell's Gorse Park & Ride Site (103)

MONDAY - FRIDAY*																	
Hospital Hopper depart Leicester Royal Infirmary (Stand 2)	0725	0755	0825	0855	0925	0955	1025	then at these minutes past each hour	55	25	until	1555	1625	1655	1725	1755	1825
Arrive St. Nicholas Circle (Stand FF)	0729	0759	0829	0859	0929	0959	1029		59	29		1559	1629	1659	1729	1759	1829
Park & Ride depart St. Nicholas Place (Stand PC)	0747	0807	0837	0907	0937	1017	1047		17	47		1617	1642	1712	1742	1817	1847
Arrive Meynell's Gorse Park & Ride Site	0800	0820	0850	0920	0950	1030	1100		30	00		1630	1655	1725	1755	1830	1900

NOTES \*Hospital Hopper operates Monday to Friday ONLY. Birstall, Enderby and Meynell's Gorse Park & Ride services operate Monday to Saturday 7am to 7pm.

**A large print version of this timetable is available on request. Please contact the Helpline on 0116 305 0002.**